

SP 30 / SP 45 “AIRPORT CARGO”

The ball transfer units with flange of the “Cargo” series are particularly suitable for airport handling systems, platforms for forwarders, deposits, harbours, etc. They are carried out in turned steel, machined from bar, hardened, to grant high load capacity and a greater resistance to stress. They are provided with a special zinc coating treatment, with sealing coating, which grants a greater resistance to corrosion and saline mists. They are equipped with a stainless-steel plate with 7 drain holes (diam.1,8 mm) on the bottom, to allow the exit of condensation, dust and impurities.

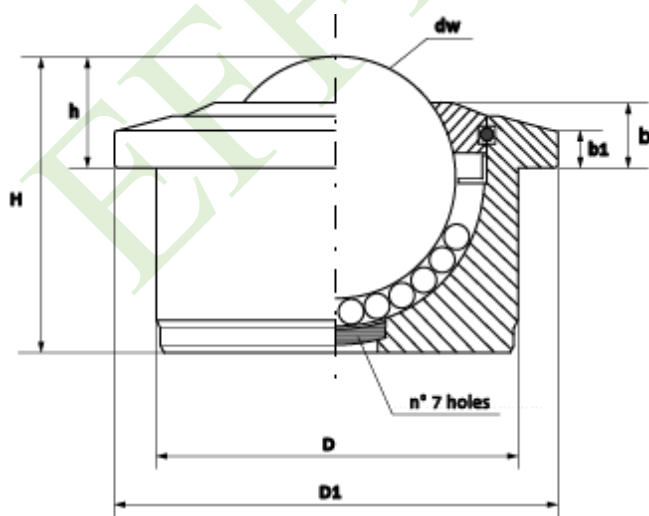
The balls are in stainless steel Aisi 420 C to resist corrosion.

To ensure the maximum smoothness in all conditions, the ball transfer units of the cargo series are carried out without felt seal.

SP 30 / SP 45 “CARGO AIRPORT”

BALL TRANSFER UNIT CARGO SERIES											
TYPE	CODE	dw	D	D1	h	H	b1	b	Load cap. (Kg.)	Weight (Kg.)	FLEECE
SP 30 C CARGO	10.030.0047	30	45 ± 0,08	55	13,8 ± 0,3	36,8	3,5	8,5	240	0,357	NO
SP 45 C CARGO	10.045.0037	45	62 ± 0,095	75	19 ± 0,4	53,5	5	10	400	1,013	NO

TYPE	SPECIFICATIONS
C	Zinc-coated. Balls in stainless steel AISI 420 C



7-HOLES-Diam.1,8mm./each

